

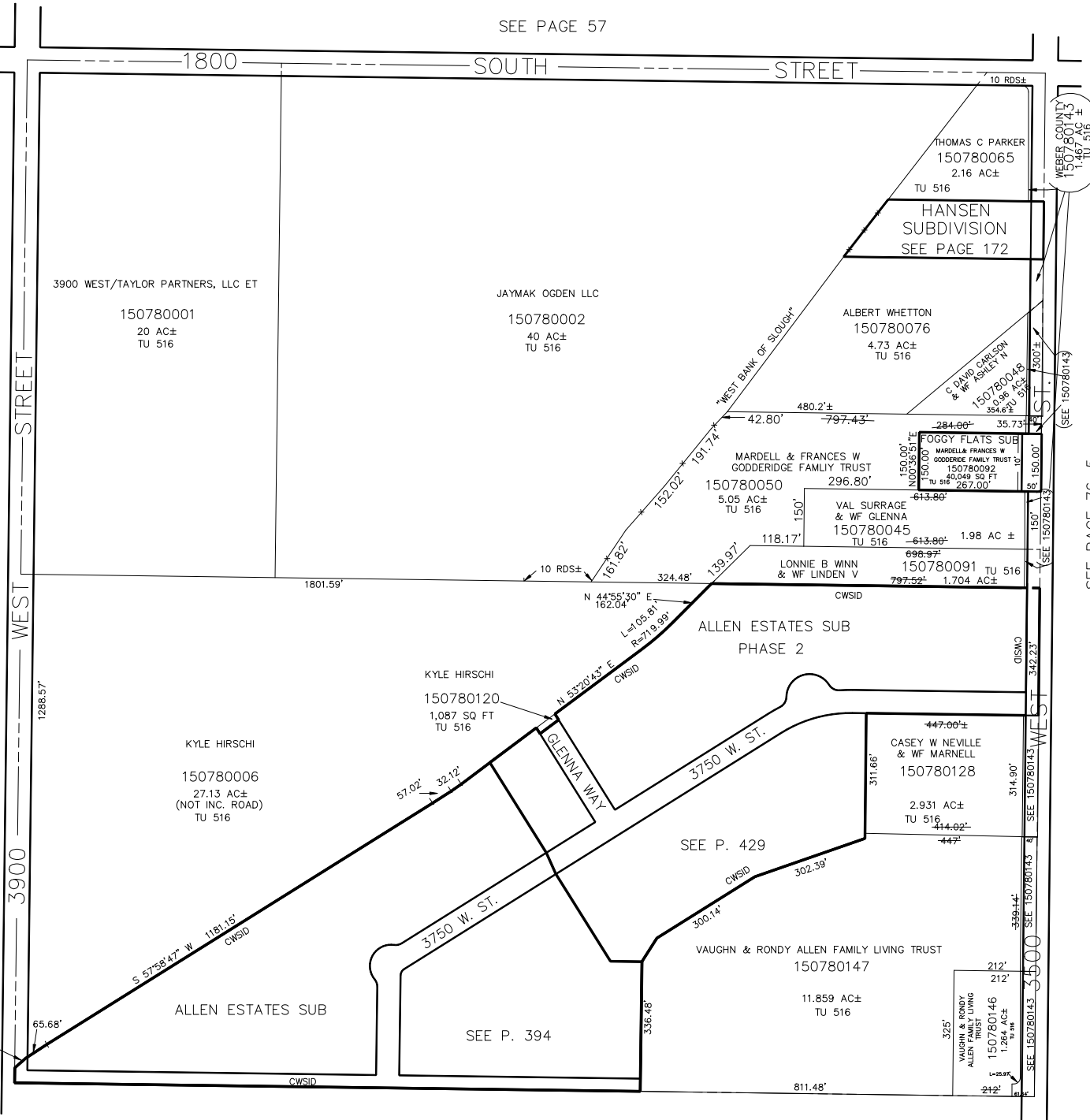
N.E. 1/4
SECTION 28, T.6N., R.2W., S.L.B. & M.

IN WEBER COUNTY
SCALE 1" = 200'

TAXING UNIT: 516

SEE PAGE 57

1800 SOUTH STREET



WEBER COUNTY
150780143
1.40 AC±
TU 516

C DAVID CARLSON
& M ASHLEY N
150780048
1.40 AC±
TU 516

FOGGY FLATS SUB
MARLELLA FRANCES W
GODDERIDGE FAMILY TRUST TO
150780092
40,049 SQ FT
TU 516 267.00'

150780128
2.931 AC±
TU 516

150780146
1.28 AC±
TU 516

SEE PAGE 78-4

SEE PAGE 76-5